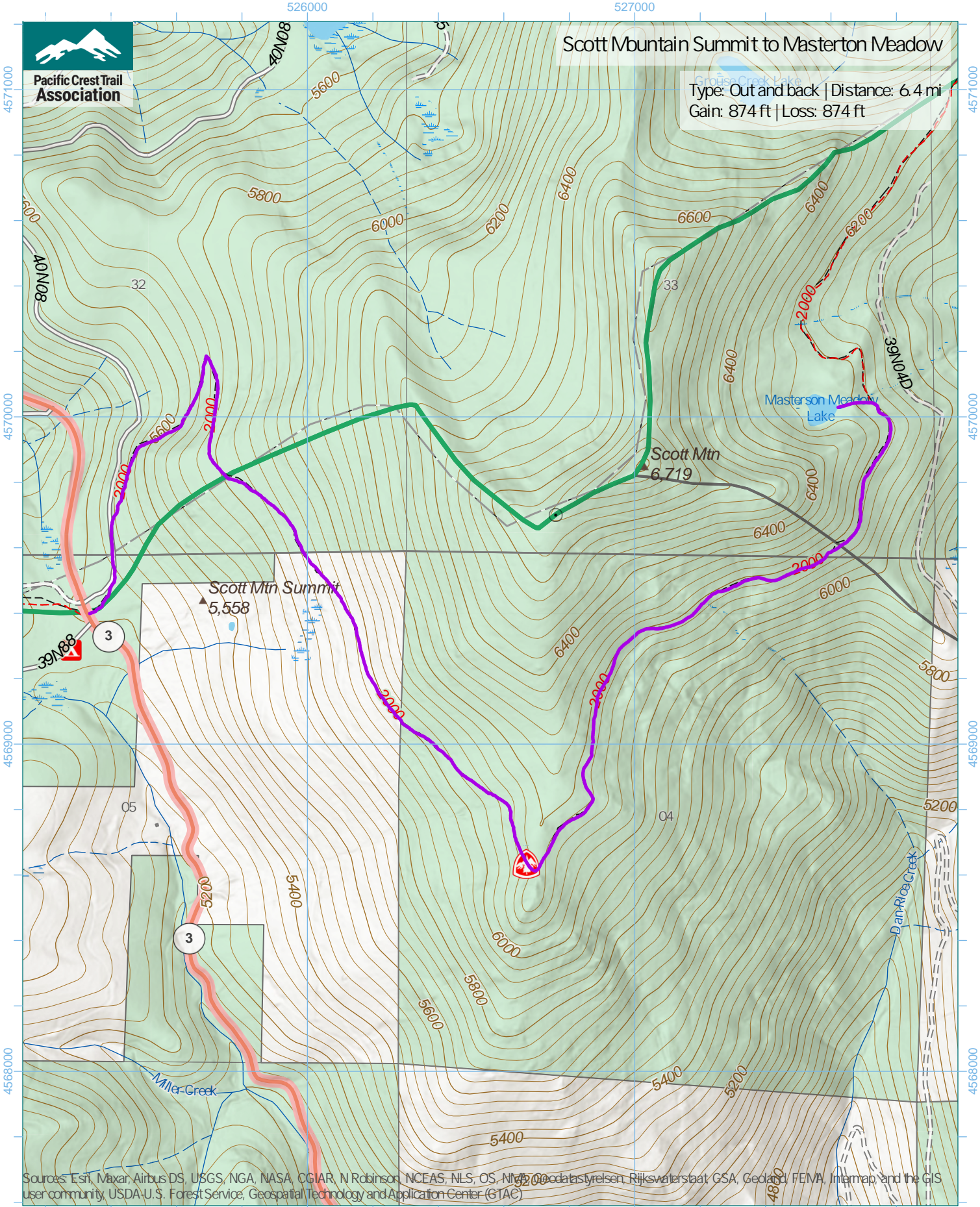


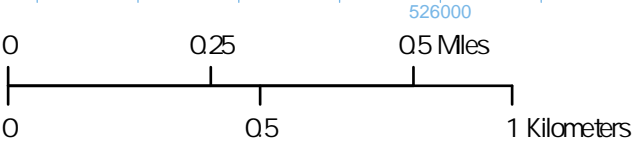


Scott Mountain Summit to Masterton Meadow

Type: Out and back | Distance: 6.4 mi
Gain: 874 ft | Loss: 874 ft



Sources: Esri, Maxar, Airbus DS, USGS, NGA, NASA, CGIAR, N Robinson, NCEAS, NLS, OS, NLD, OpenStreetMap contributors, Swatch, Rijkswaterstaat, GSA, Geoland, FEMA, Intermap, and the GIS User community, USDA-U.S. Forest Service, Geospatial Technology and Application Center (GTAC)



1 inch equals 1,250 feet
1:15,000
WGS 1984 UTM Zone 10N



Trip data by PCTA
Basemap by US Forest Service
Contour interval: 40ft